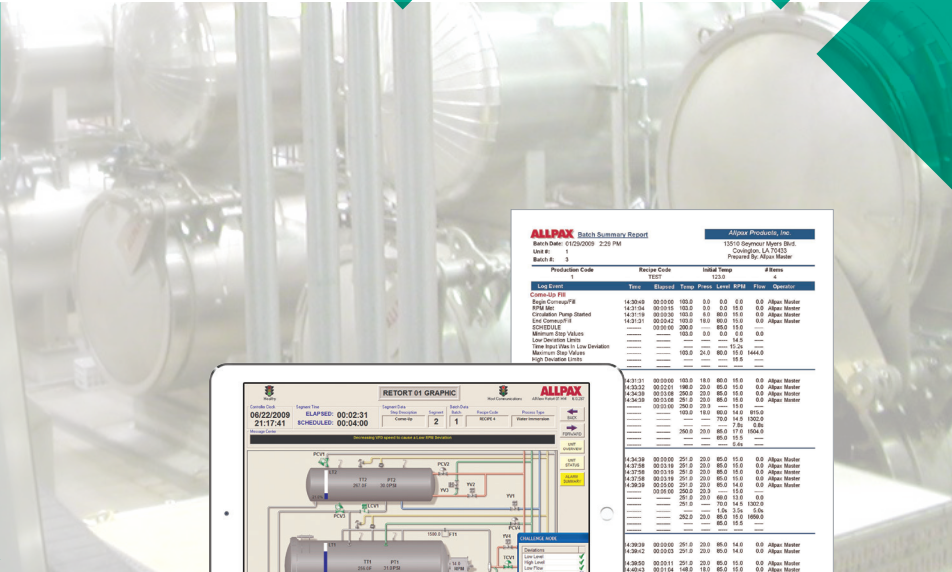




CHALLENGER

AUTOMATED SYSTEM VALIDATION

An Automated System for Process Quality Assurance

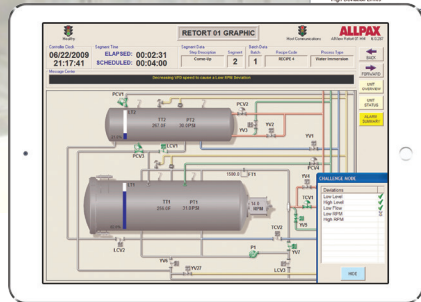


ALLPAX Batch Summary Report

Batch Name: 0100009 2:29 PM
 User ID: 1
 Batch #: 3

13150 Seymour Myers Blvd.
 Covington, LA 70433
 Printed By: Allpax Master

Predeviation Code	Runner Code	Initial Temp	#Items					
		123.0	1					
		123.0	1					
Log Event	Time	Elapsed	Temp	Press	Level	PH	Flow	Operator
Controlled Fill								
Empty Container	14:20:40	00:00:00	100.0	0.0	0.0	0.0	0.0	Allpax Master
FFS Stop	14:21:04	00:00:10	100.0	0.0	0.0	0.0	0.0	Allpax Master
Creation Pump Started	14:21:19	00:00:25	100.0	0.0	80.0	10.0	0.0	Allpax Master
End Container F	14:21:21	00:00:41	100.0	0.0	80.0	10.0	0.0	Allpax Master
Controlled Fill								
Minimum Stop Values	00:01:00		100.0	0.0	0.0	0.0	0.0	
Low Deviation Temp							0.0	
Time Apart (Min) Low Deviation			100.0	24.0	80.0	10.0	0.0	1444.0
Maximum Stop Values								
High Deviation Level								0.0



Challenger has been designed by the Allpax software engineering department to perform an automated check of all critical factors, all relevant instrumentation, and critical deviation logic while processing a ballast load. The Challenge Mode software code runs “behind the scenes”, simulating critical factor deviations in each phase of the process. When a deviation occurs, the operator interface screen will display the measured deviation value along side a list of achieved deviations.

At the end of the Challenge Mode process test, a batch log will print the results of the simulated tests. This provides documentation that can be filed with a validation or simply as part of an ongoing system maintenance file. Detailed reports provide additional information on deviations for comprehensive record-keeping. Pair Challenger with AllCheck for complete system validation.

SECTION	ALLPAX VALIDATION SERVICES
Installation Qualification	AllCheck—during initial installation (Customer is responsible after installation)
Operational Qualification	AllCheck—before installation Challenger—following installation
Performance Qualification	AllCheck—following installation Challenger—following installation

